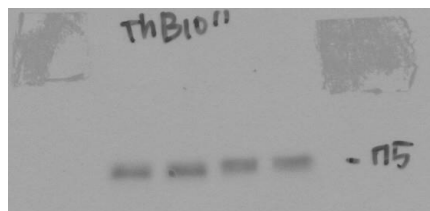
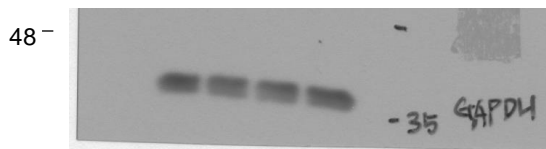


Time post sync (hr)		30		42	
		1	2	1	2

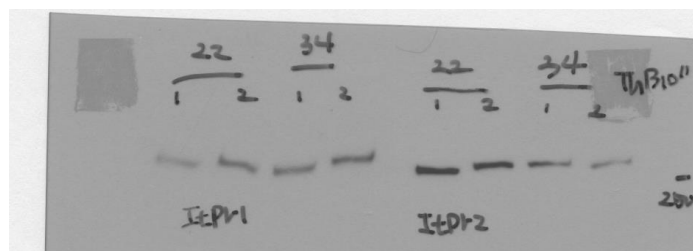


BMAL1

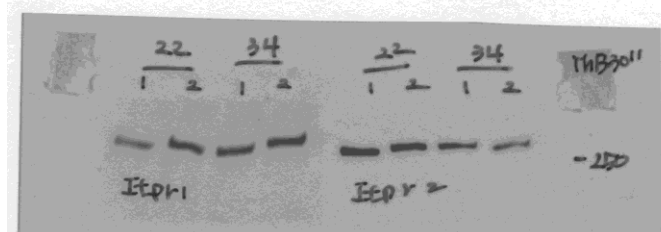


GAPDH

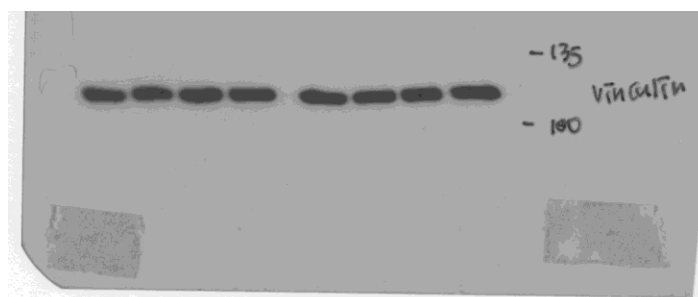
Time post sync (hr)		30		42		30		42	
		1	2	1	2	1	2	1	2



Short expose



long expose



VINCULIN

For ease of internal interpretation, we label "Time post sync (hr) 8 hr" as CT0. Therefore, the values 22 and 34 written on the scan file correspond to 30 and 42, respectively, in terms of "Time post sync (hr)."

Figure 4-source data 1 Original membranes corresponding to Figure 4, panel N, were used, with Gangnam-stained molecular weight markers. The short exposure shows the raw image of ITPR1 in Figure 4, panel N, while the long exposure shows ITPR2